



Integração na malha urbana envolvente



Plano de reconstrução . Eugénio dos Santos e Carlos Mardel



Duarte José Fava . 1807



Filipe Folque . 1856



Câmara Municipal de Lisboa . 1959



Porta do Carro séc.XVII/XVIII



Fachada Sul Imóvel de Interesse Público



Igreja . Gravura sécXIX



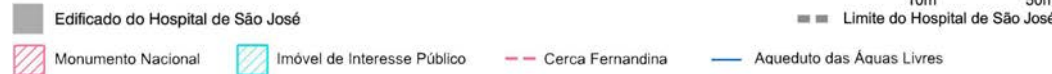
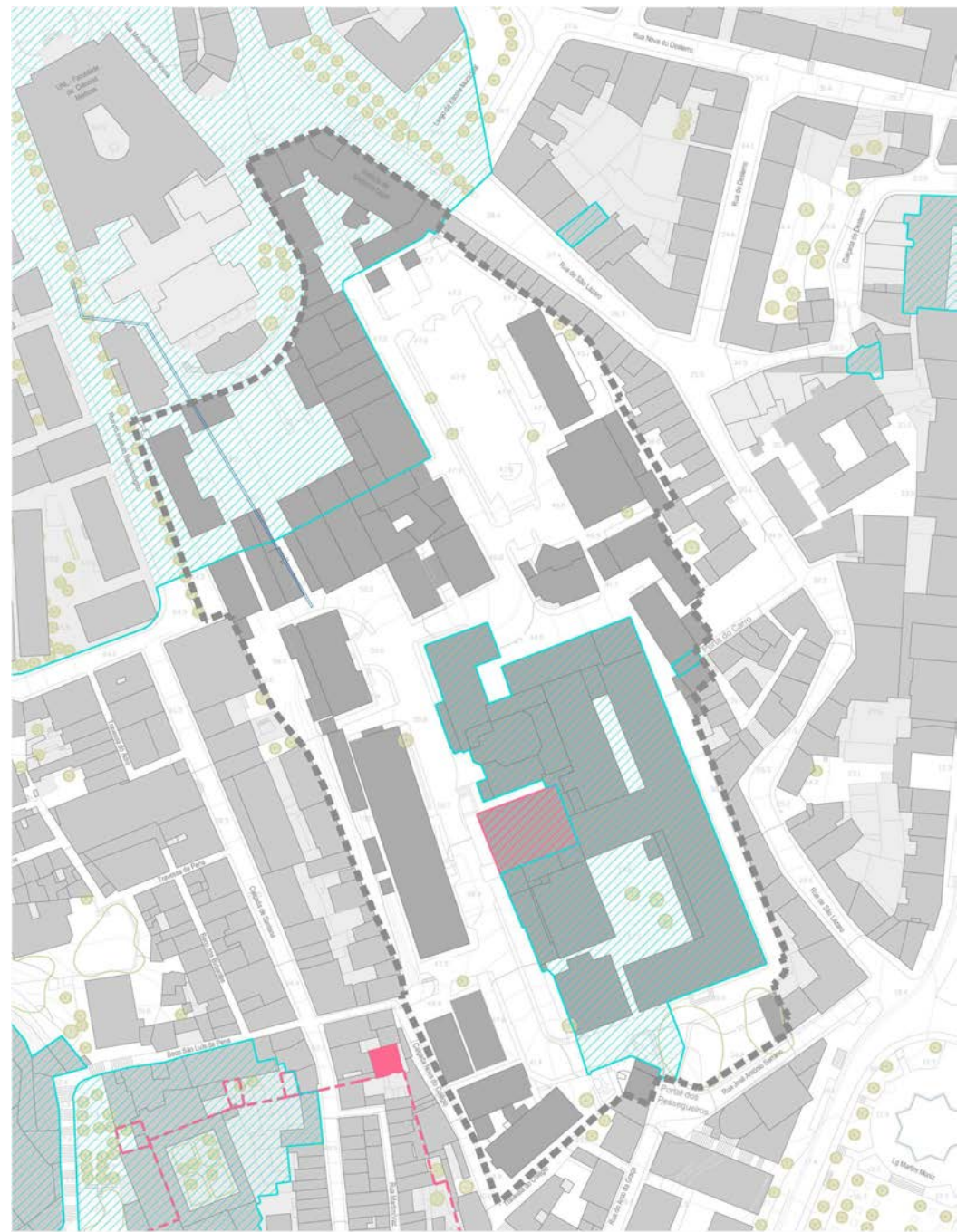
Capela . Antiga Sacristia Monumento Nacional



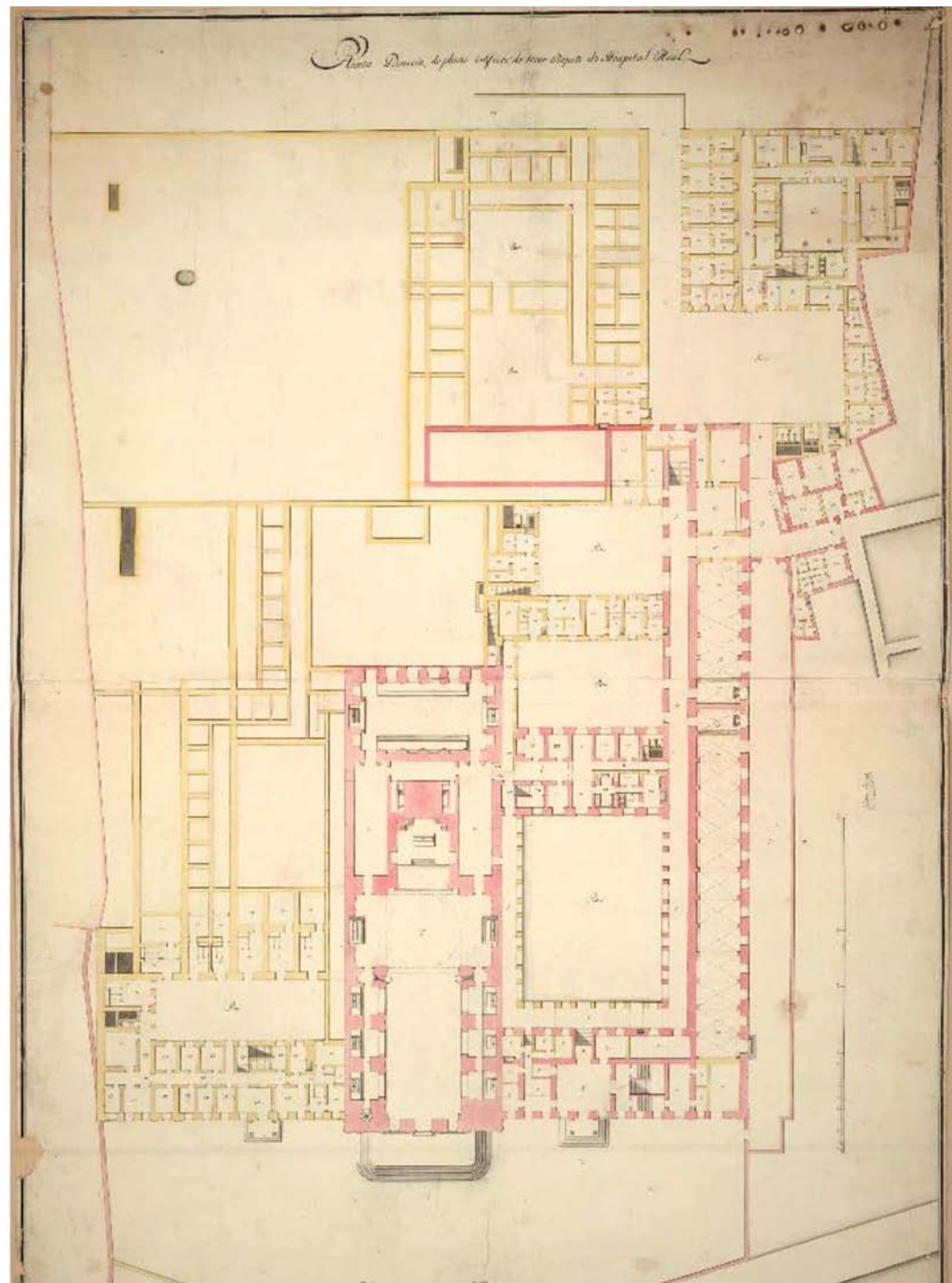
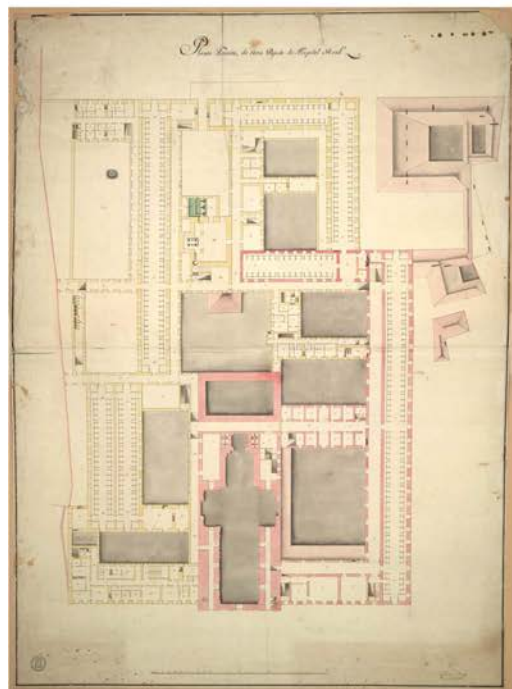
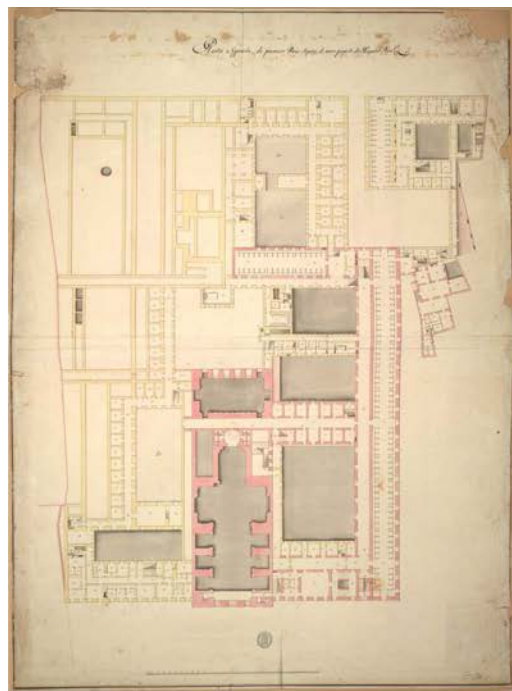
Aqueduto das Águas Livres



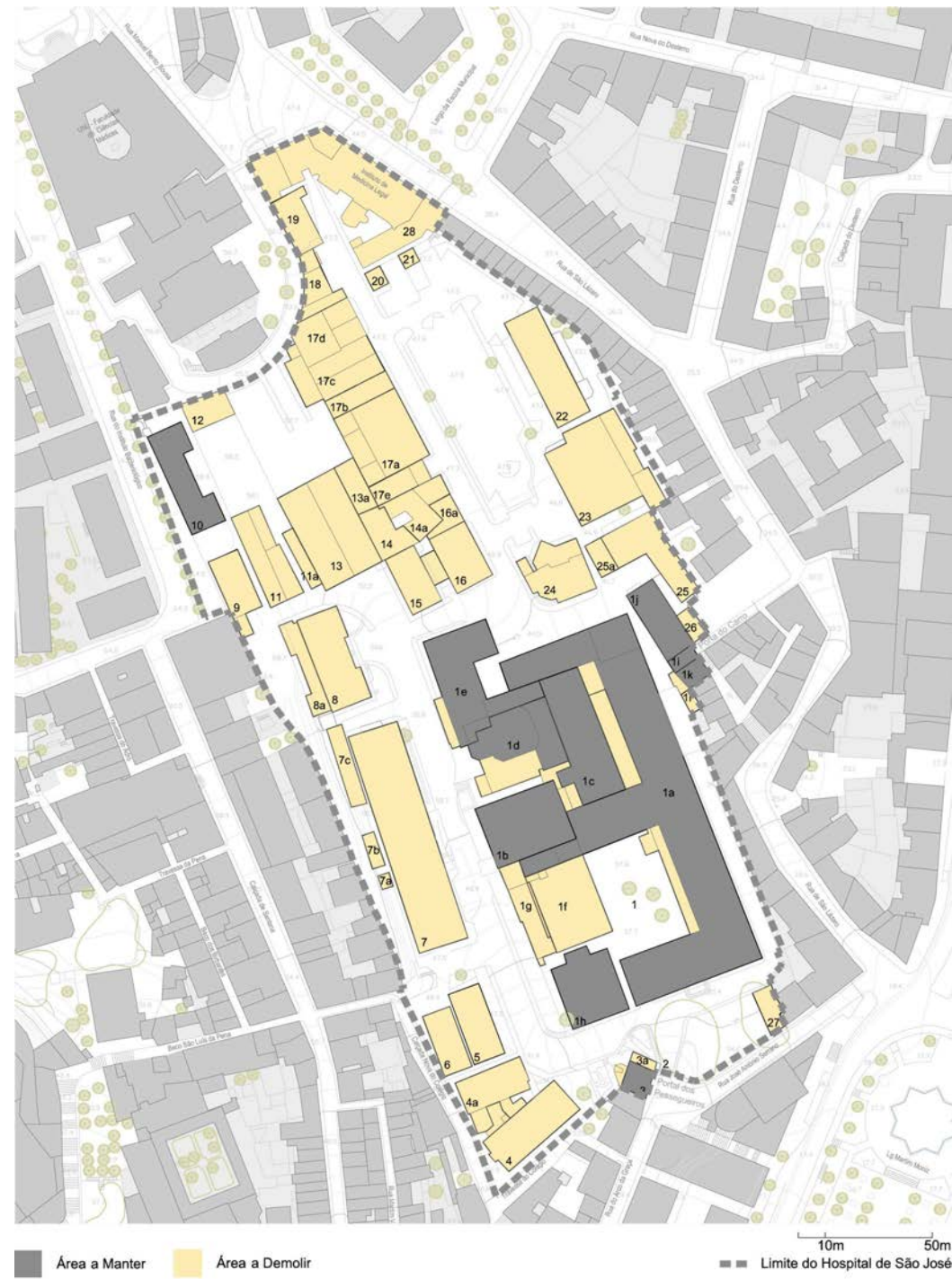
Monumento Nacional



Elementos de Valor Patrimonial



Plantas primeira, segunda e terceira
Projecto de alargamento do Colégio de Santo Antão-o-Novo para Hospital de São José
Caetano Tomás de Sousa . 1769



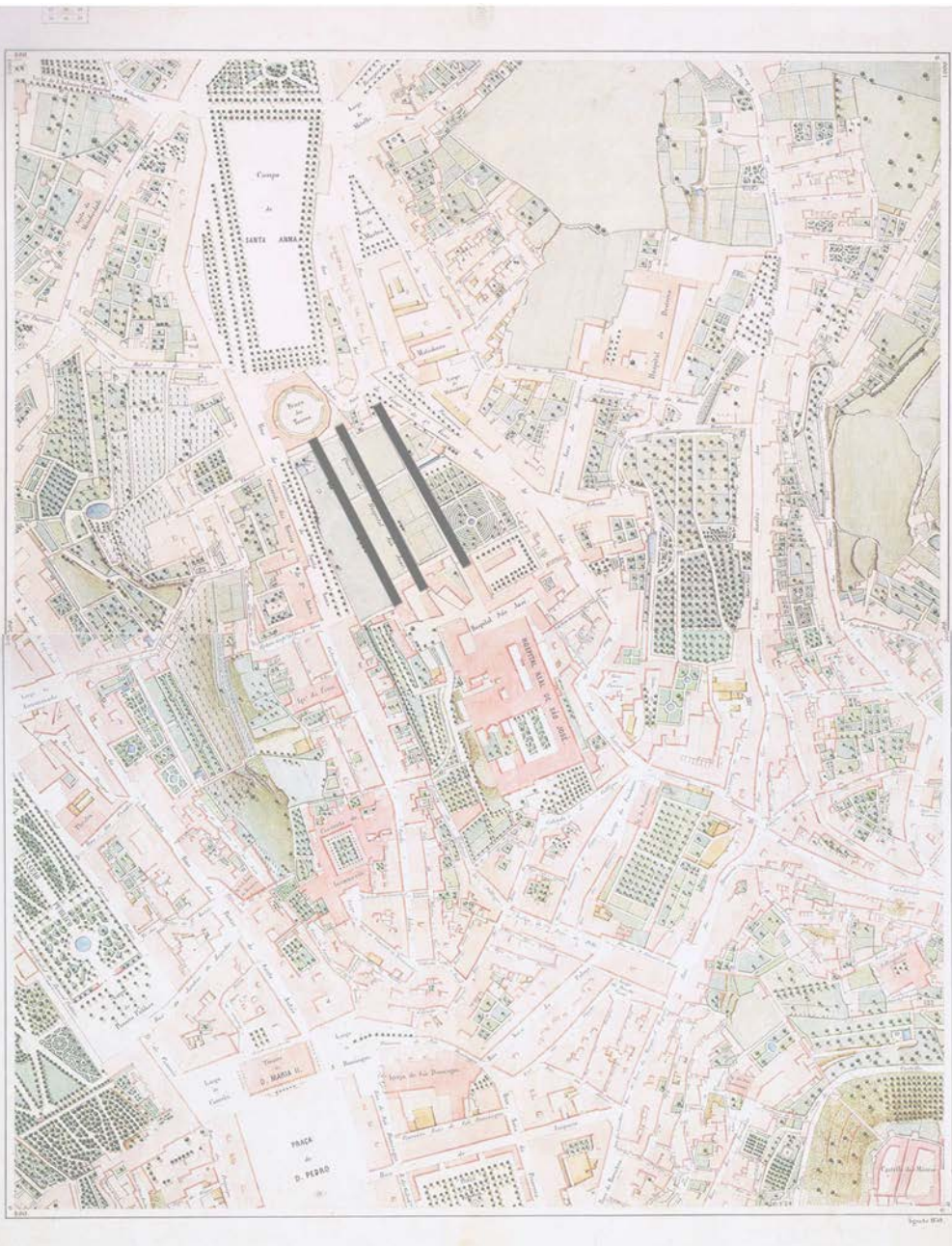
Conservação e Demolição



Plano de reconstrução . Eugénio dos Santos e Carlos Mardel



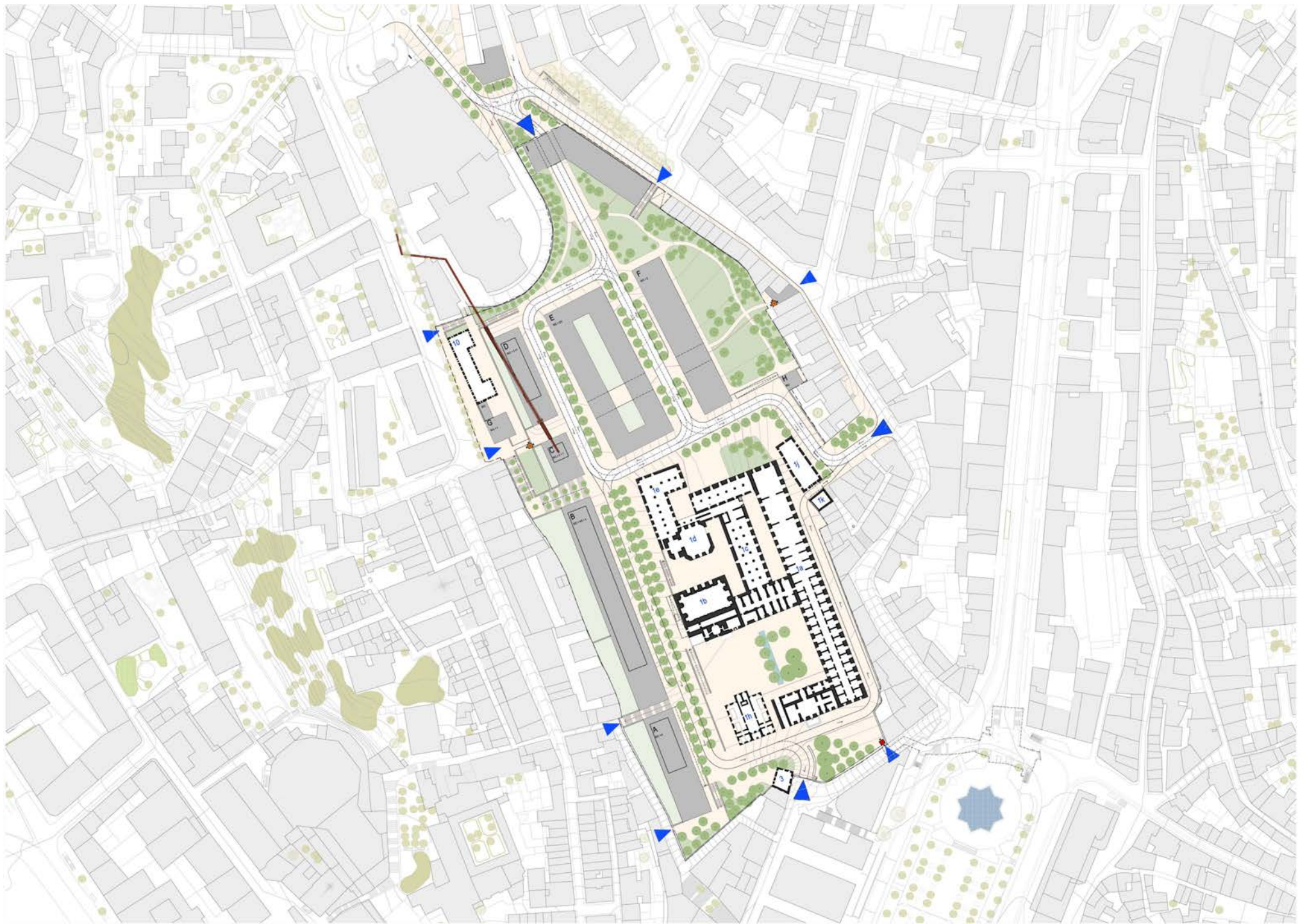
Duarte José Fava . 1807



Filipe Folque . 1856

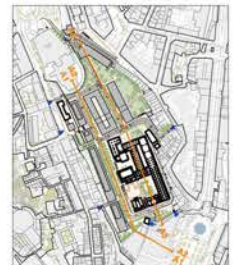
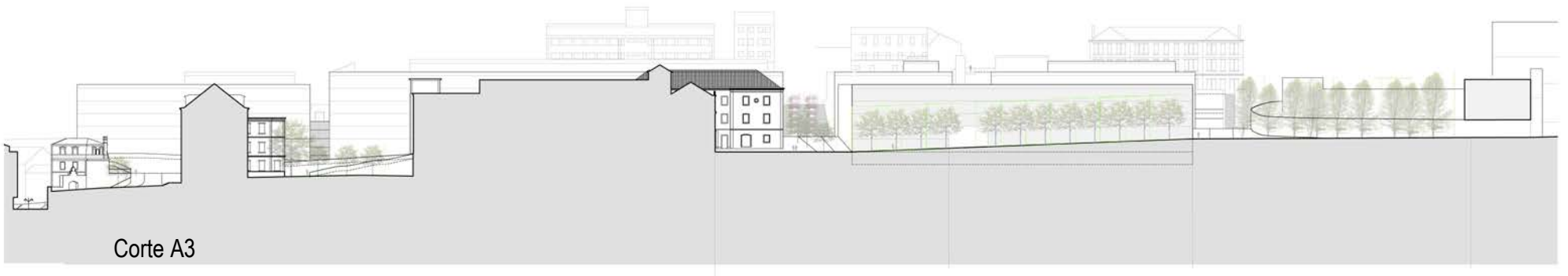


Câmara Municipal de Lisboa . 1959



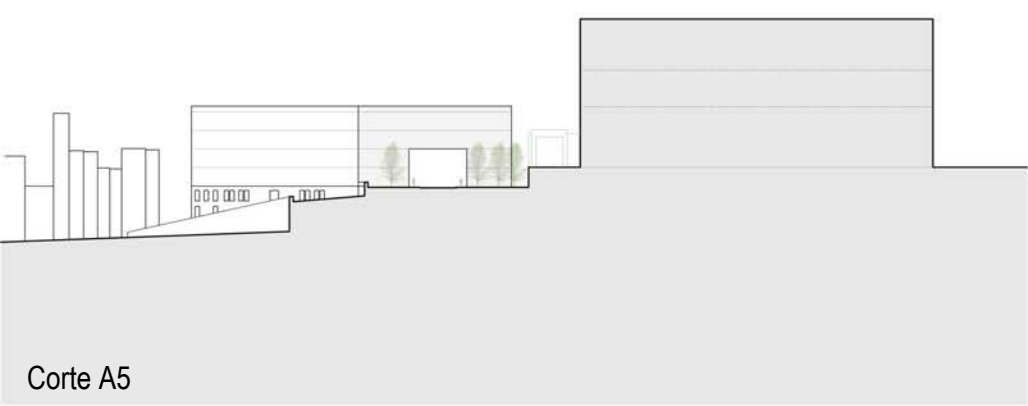
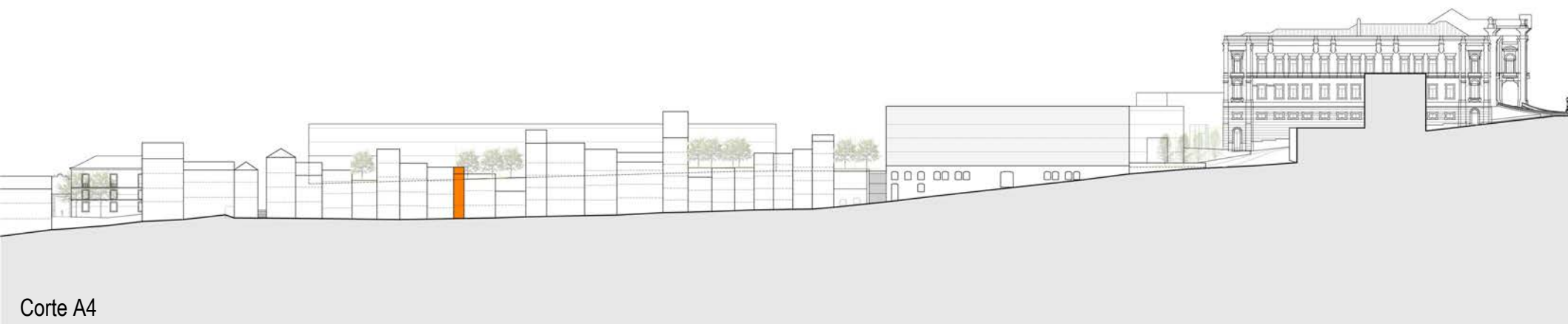
10m 50m

Proposta



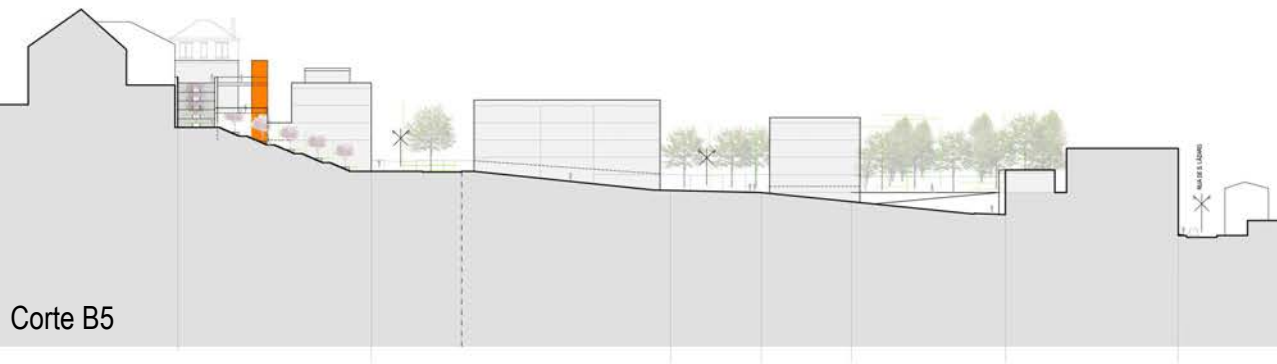
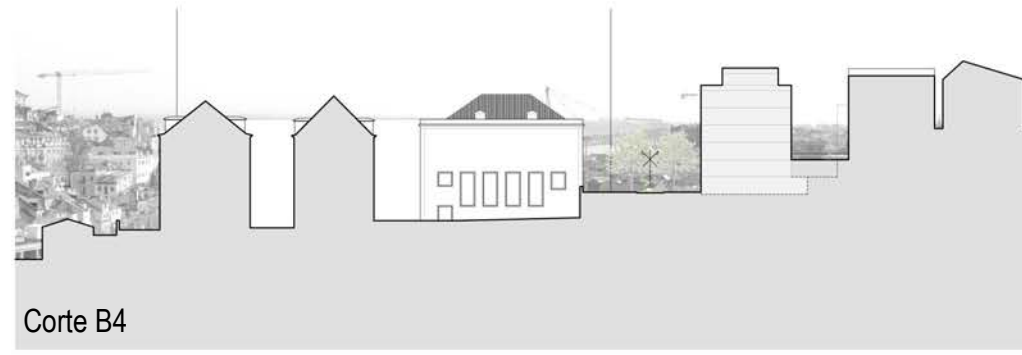
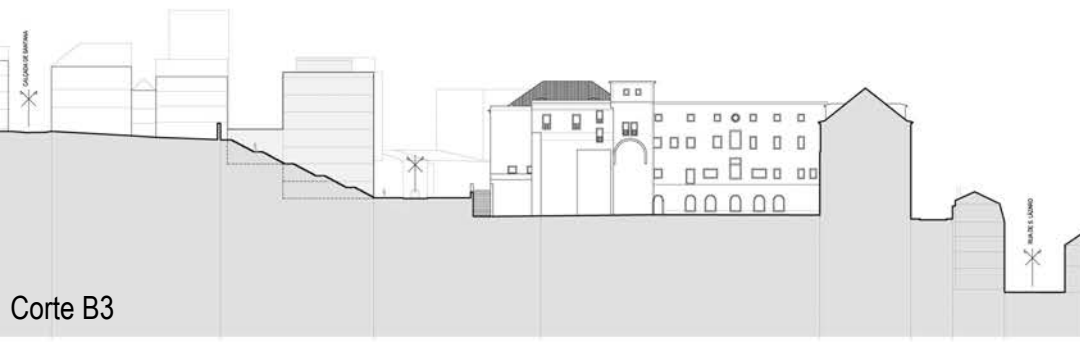
10m 50m

Cortes Longitudinais



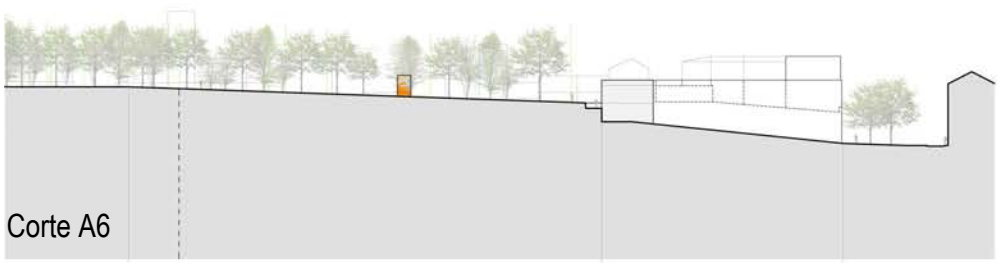
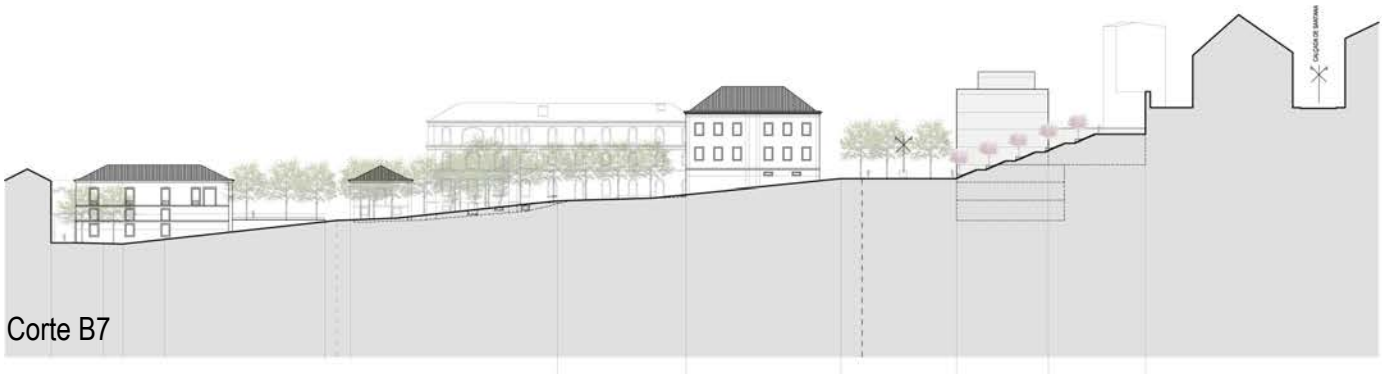
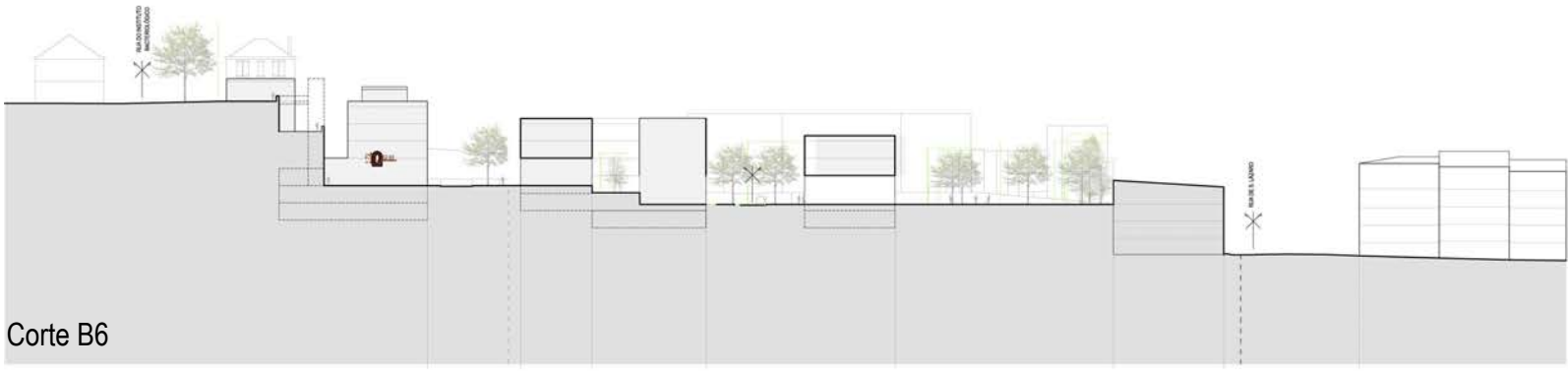
10m 50m

Corte Longitudinal . Rua de São Lázaro



10m 50m

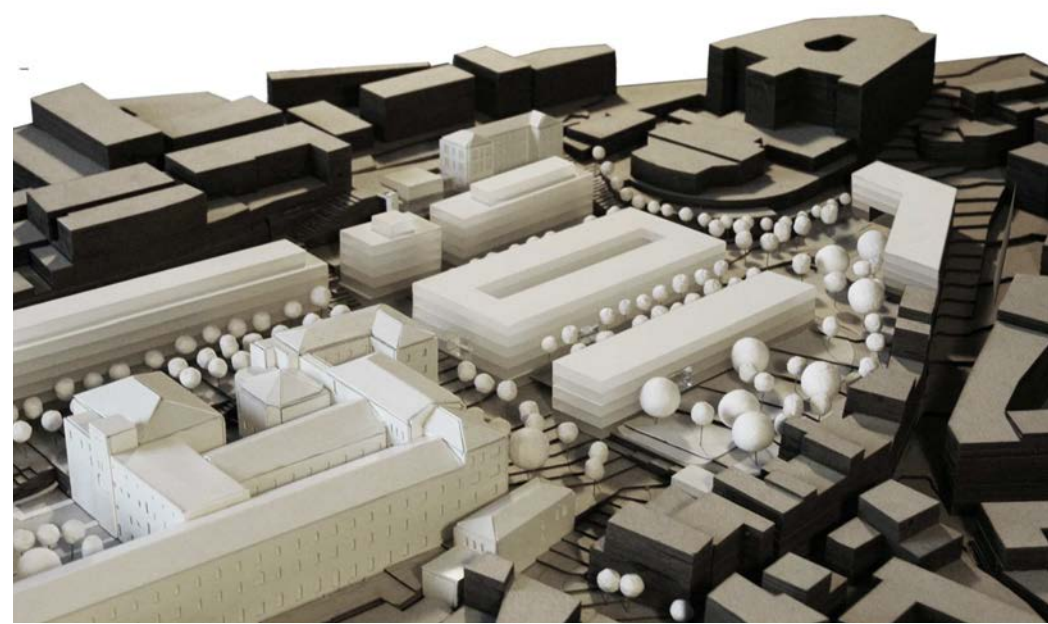
Cortes Transversais



10m 50m

Cortes Transversais













Hospital de São José . Lisboa

PEDIDO DE INFORMAÇÃO PRÉVIA

teresa nunes da ponte . arquitectura